

## Exploration

# The Universal Integration of Human Experience

Robert Campbell \*

### ABSTRACT

System 4 generates nine Terms from a Primary Universal Set of four centers concerned with the species, a Secondary Universal Set concerned with the individual, and three Particular Sets that are concerned with the actions of specific Cells and Organs of each Host human being, according to the Form of physical circumstance. The three Particular Sets have expressive and regenerative modes and transform through a six Term sequence one Step apart, taking a total of twelve Steps for each Set to complete its sequence. The two Universal Sets each have distinct transform sequences that cohere together in the way they integrate all Particular Term transformations into three Cycles. Each Cycle consists of four Particular Transform Steps. This fully coherent universal methodology provides new insights that expand the horizons of the biological sciences consistent with the evidence.

**Key Words:** universal, particular, species, individual, cell biology, organ systems, evolution, universal wholeness, hierarchies, cosmic order, organization structure, ontological structure of being.

### Introduction

There are self-similar nested patterns that recur throughout phenomenal experience that are related to how things are structured to work. Despite the unlimited diversity of human experience all people are anatomically structured the same. We all have four limbs, ten digits on hands and feet and the same complement of internal organs and nervous system, yet our behavioural capacity can vary enormously from individual to individual. The same structural pattern with variations is in evidence throughout the vertebrate lineage from amphibians to humans.

The quality that distinguishes us most from our animal ancestry is our creative capacity. Humans have developed sophisticated languages that allow us to deal with phenomenal experience in abstraction in ways that allow us to plan and work collectively in our social endeavours. We live in structured societies that reflect similar structural patterns. Phenomenal experience has nested self-similar characteristics consistent with System 4. This allows us to see into the structural mechanics of how each human Host, with a complement of Organs and Cells generates the physical behavioural Forms of each human being. The whole range of human thought, feeling and behaviour is embraced by the universal methodology of the System.

The four active interfaces of Host, Organs, Cells and physical Form define a universal hierarchy such that each interface can have dual Particular and Universal meaning that introduces

---

\* Correspondence: Robert Campbell, P.O. Box 182, Karon Post Office, Phuket, 83100, Thailand. Website: <http://www.cosmic-mindreach.com>  
E-Mail: [bob@cosmic-mindreach.com](mailto:bob@cosmic-mindreach.com) Note: This article is based on author's work of 2012.

ambiguity into how we normally express meaning in words. This emphasizes the value of delineating how these four active interfaces of System 4 can generate only nine possible ways of mutually relating a universal inside to a universal outside across an active interface between them. Each way is called a Term in a matrix of mutual transformations that define the roots of meaning in any physical, biological or social context.

## Active Interfaces between Inside and Outside

In other articles it has been shown that all phenomenal experience is dependent upon active interface processes between a common universal inside and a common universal outside, neither of which can be known to the exclusion of the other. All we can ever know is active interface processes between a common inside and outside. This creates the only boundaries that we can perceive in experience and thus the only things we can identify. Our sense perceptions and our technical instruments that supplement them all depend on active energy interactions across surfaces that define an active inside distinct from a passive outside in some way. Light generated within the sun is projected out to Earth and reflected from the surfaces of objects around us that the retina of our eyes pick up and transmit via energy processes across the active interfaces of neurons to the brain, where action potentials of more neurons interpret it, and so on with our other senses.

We have also seen that there is a Universal Hierarchy of active interfaces between the Universal Centre and the Universal Periphery. The hierarchy is structurally required by the nature of Universal Wholeness to account for the diversity of experience as we perceive it to be. We implicitly have to integrate this diversity to make sense of it in a common framework of understanding of some kind. Otherwise our experience would fragment into mutually exclusive elements that would prevent us from interpreting events as meaningfully related. Universal Wholeness is a requirement implicit in a coherent universe. That is why we seek out universally valid scientific laws on the one hand and religious or spiritual beliefs on the other.

## The Universal Hierarchy

Other articles demonstrate that the Universal Hierarchy of System 4 is represented by the four active interfaces. Term 9 of System 4 belongs to the Primary Universal Set and the four active interfaces proceed in a linear sequence that can be assigned words as follows:

**(1)Idea → (2)Knowledge → (3)Routine → (4)Form.**

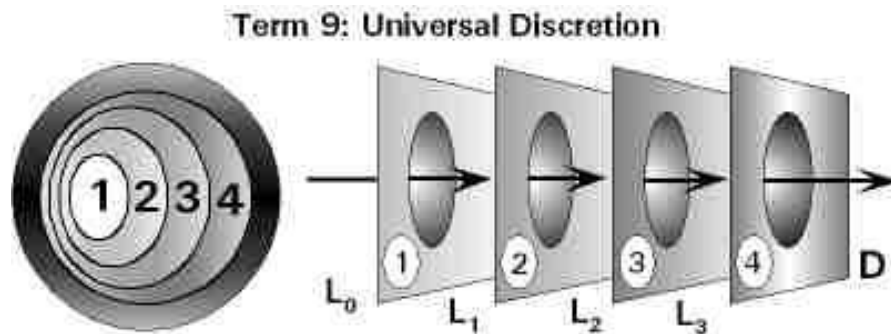
We are all familiar with this universal hierarchy in our ordinary experience. For example if we have an **Idea** to build a house this directs our acquired **Knowledge** of how to go about it which in turn directs our **Routines** of behaviour erecting the house which gives **Form** to the final house consistent with the original idea. The atoms and molecules on the planet are prescribed by System 3 and formed by System 4 into bricks, lumber etc., in the physical house. System 4 elaborates within the context of System 3 so even giving Form to the Idea of going to the store for groceries or eating a meal conforms to the hierarchy. The hierarchy is valid no matter what idea we wish to realize in form. It is universal. It also applies to businesses and organizations of all kinds.

The hierarchy is universal in a broader self-similar sense as well. The human species is an archetypal *Idea* as an organized energy pattern that directs *Knowledge* implicit in our various organ systems such as nerves, glands, viscera, muscles, skin and sensory organs that work together to direct biological *Routines* of cells that allow us to give *Form* to thought and physical behaviour. We know that we share a common humanity. It is a more primary archetypal *Idea* distinct from a creative Idea such as building a house. Evolution has invested hundreds of millions of years of acquired *Knowledge* into our biological *Routines* that allow us to animate our physical *Form* as *Host* to build a house or go to the market. The archetypal *Idea* directs the implicit *Knowledge* that directs the *Routines* by which it works to direct our physical molecular *Form*, not vice versa. We often do not recognize that *Knowledge* is synonymous with the organization of phenomena in some way and this includes how the body's organs meaningfully relate to one another. Atoms and molecules do not spontaneously self assemble into organized living species. Molecular *Forms* receive their direction from behind the physical scene, as we have seen in other cell articles.

Biological processes are dependent upon the self-regulation of enzymes in highly recursive processes involving active energy patterns at active interfaces, that are together consistent with an overall archetypal energy pattern of the *Host* that directs *Organs* that direct biochemical activity in *Cells* that direct the physical molecular *Form* of the host. While a specific creative idea of a specific human individual may incur active neural cell processes these electronic patterns are superimposed on the archetypal pattern of the whole human being. We can thus write the Universal Hierarchy for all human beings as follows:

**(1)Host → (2)Organs → (3)Cells → (4)Form.**

The Host is an integrated energy pattern that can entertain creative ideas such as building a house that directs various Organs such nerves and muscles that direct Cell routines to mobilize and regenerate their biochemical resources accordingly to sustain their active physical Form as directed. We can also write this discretionary Universal Hierarchy in a general way as a succession of active interfaces numbered as Centres from a universal active centre inside to a universal passive outside or periphery. The universal active inside is represented by light  $L_0$ . The universal passive outside is designated by darkness  $D$  with graduated levels between them:



**Fig. 1**

Term 9 of the Primary Universal Set is thus characterized as expressive since it prescribes a universal pattern by which all humans can express themselves. This Expressive mode (UT9E) alternates with a Regenerative mode (UT8R) in its transform sequence.

## The Primary Regulation of Cycles

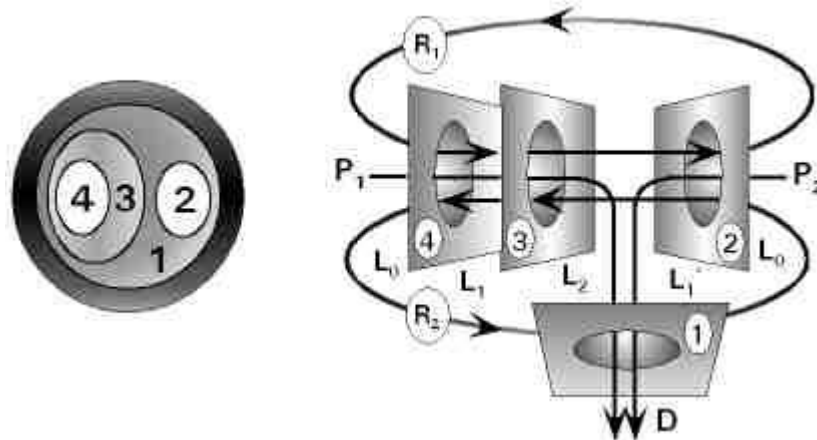
As pointed out in other articles there are only nine possible ways that four active interfaces can be mutually related with respect to inside and outside. Each way is called a Term. Variants of these nine ways are possible if the numbered centers exchange places within each Term. Six of the nine Terms are defined by three Particular Sets that transform through a six Particular Term sequence one Step apart. These Particular Terms alternate between a seven Step expressive Term sequence followed by a five Step regenerative Term sequence, making a total of twelve transform Steps required for each Particular Set. In the regenerative modes of each Term, Centers 1 and 2 exchange places. The other three Terms are always Universal. Term 9 belongs to the Primary Universal Set and Terms 3 and 6 belong to the Secondary Universal Set.

The Particular Term 8 has no Regenerative Mode because this Mode of Term 8 is a Primary Universal concern. In this case the Primary Universal Set transforms into the Universal Term 8 Regenerative Mode (UT8R) after two Particular Steps and then transforms back to Term 9 (UT9E) after two more Particular Steps to begin a new universal transform Cycle. The twelve Particular transform Steps are thus regulated into three Cycles of four Particular Steps each. This is essential to the self-similarity of how the whole System works, as we shall see.

## The Primary Universal Set and the Regenerative Term UT8R

When the Primary Universal Term 9E transforms to UT8R Centers 3 and 4 transpose or turn around to face Center 2, while Center 1 transposes to contain Centers 2, 3 and 4, as shown in Figure 2.

**Term 8R: Balanced Feedback**



**Fig. 2**

In UT8R the Relational wholes  $R_1$  and  $R_2$  prescribe a countercurrent balance between C2 and C4 across C3, all within the context of C1.  $R_1$  represents an input from molecular Form (4) within Cells (3) as they relate to Organs (2) all within the context of the archetypal energy pattern of the Host (1).  $R_2$  represents a *potential* response of Organs (2) as they relate to Cells and their subjective molecular Forms (4) all within the same context of the Host. The response includes an *anticipated* need to act as distinct from an actual response because the Term is concerned with universally integrating the energy needs of the Host (1) over a span of time. It is regenerative in this respect. The molecular Forms (4) of Cells (3) must find a subjective and an objective balance with the needs of Organs (2) such as muscles and nerves as subjectively required by the Host (1). This relates a collectively organized motor response to collective sensory inputs from the environment as well as the energy resources needed to respond.

These needs are balanced by the projections  $P_1$  and  $P_2$ . The anticipated demands of Organs(2) as they relate to the energy patterns of the Host(1) are represents by  $P_2$ . The molecular energy available in the Form(4) of food energy input to Cells(3) of the Host(1) is represented by  $P_1$ . It must balance the anticipated energy demands of Organs(2) as they relate to the impending actions of the Host in  $P_2$ . This represents a balance between available energy revenues  $P_1$  versus anticipated expenditures  $P_2$ . It is budgeting. It anticipates a balance between demand and available supply for the Host, to meet the needs of the whole human being. In other words the available energy resources available to all cells must be distributed according to an anticipated priority of needs. This is more than the Primary Universal Term can do alone, because all the Universal Centers are open and unbounded. They relate to all people. The Primary Universal Set concerns the species. It requires the coherent operation of the Secondary Universal Set associated with a specific human individual, as illustrated later.

### The Related Transform Sequences of Both Universal Sets

The Secondary Universal Set begins as Term 3 (UT3) in Step 1 of each four Step Cycle. In Step 2 it transforms to Term 6 (UT6) where it stays for Steps 2 and 3 while the Primary Universal Set transforms mid-Cycle to the UT8R Term for Steps 3 and 4. In Step 4 the UT6 Term inverts to an expressive mode of Term 2 (UT2E) which is an integrated creative idea of thought or behavior of the Host. This creative idea is distinct from but related to the archetypal energy pattern of the Host as a complete human being. It is superimposed on the living energy pattern archetype that sustains the whole human being. Between Step 4 and Step 1 of the next Cycle both Universal Sets transform back to their original positions, namely UT9E and UT3. This is summarized in the following table:

Universal Set	Step 1	Step 2	Step 3	Step 4
Primary	Term 9 E	Term 9 E	U Term 8 R	U Term 8 R
Secondary	Term 3	Term 6	Term 6	U Term 2 E

### Primary and Secondary Hierarchies and Archetypes:

Term 3 can be described as the Transference of Idea into Form. It has a Secondary degree of universal access to the organized energies of the Void as they relate to a specific human being in a specific circumstance. Each human being is a Host of its Organs and Cells as these archetypal

patterns direct the Host's molecular Form. Each human is an organized archetypal energy pattern. This Secondary Universal Human Archetype of each individual person is consistent with the self-similar Primary Human Archetype that embraces all humanity. In other words there is a self-similar nested hierarchy of archetypal energy patterns from Human Host to Individual Host to Organs and Cells. This Primary self-similar hierarchy exemplified in Term 9E synchronously directs the molecular biology of all humans. In other words it functions at a more Primary level than the Secondary Set that relates to each person. The two Sets must work in concert to generate the specific molecular Form of one human individual. They must be mutually coherent.

## The Quantum Energies of the Void

The quantum energies of the Void are likewise hierarchically organized by the way Particular Sets that execute the work of cells are collectively integrated by the Universal Sets. The Particular Term 7 as illustrated in Figure 3 is a quantum memory term that is a formless component of the boundless Void. Term 7 has timeless or eternal characteristics, since it simultaneously reconciles the universal inside and outside as core elements of coalesced technique (C3=C4) within energy interfaces of the Human Host(1) and Organs(2). This is illustrated in the Figure 3 Regenerative Mode of Term 7. In this regenerative mode, T7R, the core elements of technique (C3=C4) throughout a human body are coalesced as implicitly *being* a specific regenerative aspect of the Host (1). This includes more than just the technique employed in one action sequence such as walking. The element of techniques employed collectively specify the Host's character, thoughts, feelings and behavior, consistent with the personal and collective evolutionary history of the individual and humanity. This directs the host's Organ (2) processes as a budgeted distribution of energy needs associated with the collective anticipated pattern of core techniques likely to follow in each Cycle. In the alternate Expressive Mode Centers 1 and 2 exchange places such that the core techniques (C3=C4) direct the energy patterns of Organs (2) first, that in turn animate the Expression of the Host (1). The associated expenditure of energy must be accounted for and balanced with the budgeted distribution in the Regenerative Mode.

## Linking Memory Recall with Sensory Input

Term 7R: Memory Resources

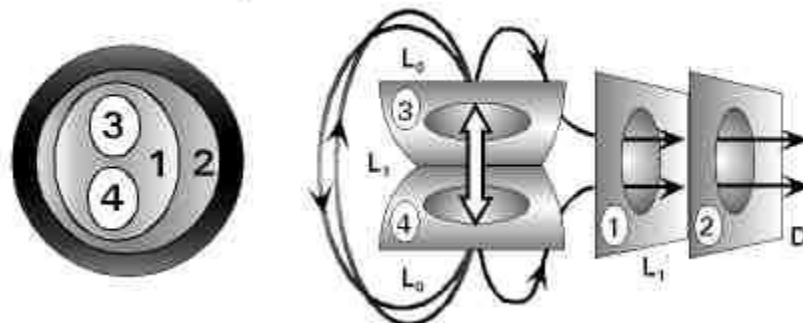
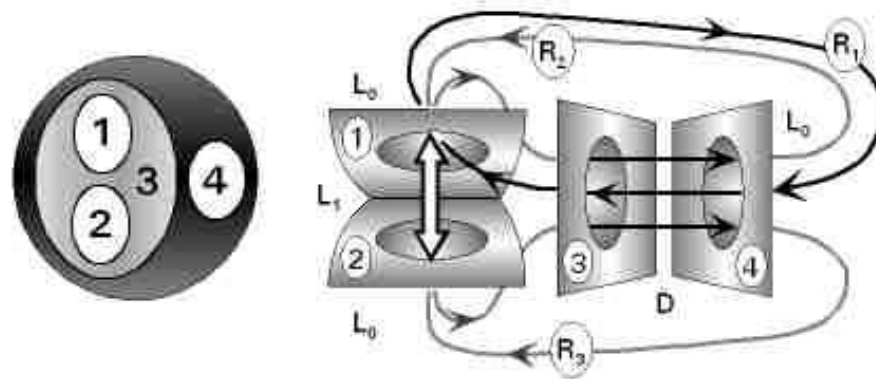


Fig. 3

**Term 4E: Sensory Organization**



**Fig. 4**

In Step 1 of each Cycle Term 7R is always synchronous with Term 4E which represents sensory input. For each human Host T4E means patterned energy input via vision, touch, hearing etc. from the physical environment to the central nervous system. For the Cell this means a signaling cascade, such as that initiated across synapses between nerves or by signaling chemicals in general. The latter relate first to Cell membrane processes in T1 that next transforms to the cascades to the nucleus in T4.

The point is that T4 and T7 are coupled such that recall is always relevant to sensory input, whether it is a single cell or a human individual. In Step 3 of each Cycle T7E is always synchronous with T4R. These two Terms are always in opposite modes and they both have a coalesced pair. In T7 the coalesced pair is C3=C4. In T4 the coalesced pair is C1=C2. By comparing Figures 3 and 4 it is apparent that the two terms are reciprocals in this respect. The UT3 term cross-links or bridges these two terms to access recall consistent with sensory input. This is accommodated by the central coalescence C2=C3 in the UT3 term illustrated in Figure 5.

The third synchronous Particular Term in Step 1 is T8E. In this Term **R<sub>1</sub>** and **R<sub>2</sub>** balance energy input with output in conjunction with the projections **P<sub>1</sub>** and **P<sub>2</sub>** respectively, within the context of specific Organs (2), such as muscles and nerves. T8E cannot be Universal because the context is specific to Organs (2) involved in an action sequence initiated subjectively to Organs by the Host (1). UT8R cannot be Particular because the context is all Organs (2) and Cells(3) subjective to the whole archetypal Host (1). There will be more on this later.

**Transference of Idea into Form – UT3**

The Secondary Universal Term 3 has a central coalescence C2=C3 that binds countercurrent identities together between Idea(1) and Form(4) as illustrated in Figure 5. This central coalescence between inside and outside relates Organs(2) and Cells(3) as a behavioral unit to Idea(1) and molecular Form(4). It thus has eternal characteristics between internal subjective Idea(1) and the external objective Form(4) which give it access to the Void. In other words Cells(3) as coalesced with Organs(2) relate to the internal archetypal Idea(1), while Organs(2) as coalesced with Cells(3) relate to the external molecular Form(4).

The Primary Universal Term 9 displays a four Step time-like succession from Idea(1) to Knowledge(2) to Routine(3) to Form(4) in sequence, consistent with each 4 Step Cycle. Each active interface in the Term is open and thus without specific boundaries or limits apart from those implied by the context, in this case the global human context being considered. As such the Primary Idea(1) is a Universal Human Archetypal pattern that defines all humans as members of a common species. In Step 1, this open Idea(1) includes all archetypal energy patterns of all Host human beings. It implicitly selects them from the Void for synchronous recall into Form.

### Term 3: Transference of Idea Into Form

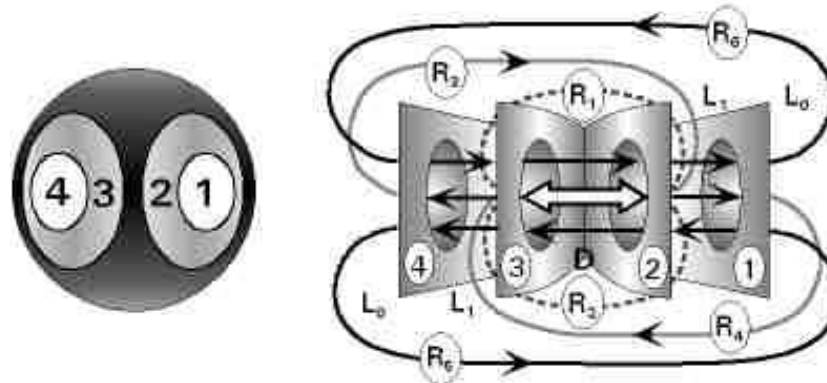


Fig. 5

Meanwhile the Secondary Universal Term 3 (UT3) is assimilating a specific animating action sequence for each specific human being via the C2=C3 (Organs=Cells) coalescence that links Idea(1) to Form(4). In Step 2 of each Cycle UT3 transforms to UT6 which represents a specific corporeal body of an individual Human Being with a separate physical Form. The Primary Universal Term 9 (UT9E) does not transform in Step 2. It proceeds to Step 2 which is the Knowledge(2) interface which succeeds the Idea(1) interface in Term 9. The corporeal body UT6 is implicitly invested with Knowledge according to its perceived circumstance as in Figure 6.

In Step 2 this UT6 Term is also synchronous with the Particular Terms T1R, T2E and T5E. The T1R term is a gamma motor simulation that anticipates a capacity to enact a patterned response. T2E is an expressive Creative Idea  $R_1$  superimposed on the triad of closed centers representing archetypal forms of Host(1), Organs(2) and Cells(3). T5E is enacting a patterned action sequence developed in preceding Steps. This is illustrated in other articles at the following links:

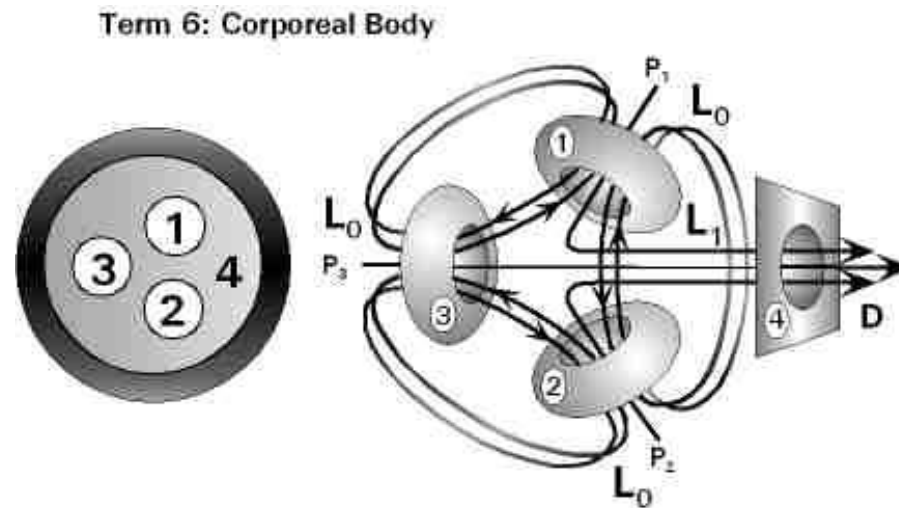
<http://www.cosmic-mindreach.com/System4Terms.html>

[http://www.cosmic-mindreach.com/System4\\_Sequence\\_Steps.html](http://www.cosmic-mindreach.com/System4_Sequence_Steps.html) .

It can be noted here that in Step 3 the Primary Universal Term 9 must transform to a subjective concern with each specific Host to be consistent with the Secondary UT3 Term in Step 1 and the Transference of Idea into Form. In UT3 the Cells(3) interface is facing and coalesced with the Organs(2) interface from a subjective (left side) perspective and molecular Forms(4) are subjective to Cells(3). This arrangement is consistent with the countercurrent identities  $R_1$  and  $R_2$  within the subjective context of the Host(1) in UT8R of Step 3. As we shall see this translates as a budgeting concern with Routines(3) which is the third active interface in the time-like succession of Steps indicated by the successive active interfaces in UT9.



## The Step 2 Corporeal Body – T6



**Fig. 6**

In UT6 each individual person's corporeal body explicitly displays a triad of closed shapes within the open context of molecular Form common to the operating field of the whole planet and the universe. The closed shapes of Cells(3), Organs(2) and the Host(1) human being are represented by the ellipses within the context of the open boundless molecular Form(4) interface. Consistent with Step 2 in UT9, we have Knowledge of our bodies and can identify the physical closed shape of a Cell or an Organ or a specific Host human individual. Each has a specific closed boundary or surface that is mutually dependent upon the other two members of the triad.

All closed surfaces are members of a triadic relationship in some way, in all the Higher Systems. In this case our various sensory organs can feel, see and know our various body parts such that we tend to identify this physical body as being our "self" and constituting who we are. While common logic may tell us this is true, insofar as our Cells that constitute our Organs and Body clothe themselves in molecules, it is also clear from Figure 6 that the triad is independent from the molecular Forms (4) common to the whole universe. The triad works behind the physical scenes to sustain and animate each of us.

There are three projections that relate the triad to the physical environment. One of the synchronous Particular Terms, T5E, is enacting a pattern of parallel action sequences in muscles throughout the Host's body that requires mutual reconciliation with synchronous T2E and T1R terms in the other two Particular Sets that will result in action sequences to follow. All this must be consistent with a continual flow of coherent action in Cells(3) and Organs(2) throughout the body of the Host(1) as these three members of the triad mutually relate to the physical environment via projections  $P_3$ ,  $P_2$  and  $P_1$  respectively. This mutual balance is facilitated by the Knowledge(2) open active interface of the Primary Universal Term T9 (UT9E) in Step 2 of the Cycle. The energy supplies  $P_1$  available to the Host(1) must balance expenditures  $P_3$  of Cells(3) and  $P_2$  of Organs(2).

## Step 3 and a Coherent Balance between UT8R and UT6

### Term 8R: Balanced Feedback

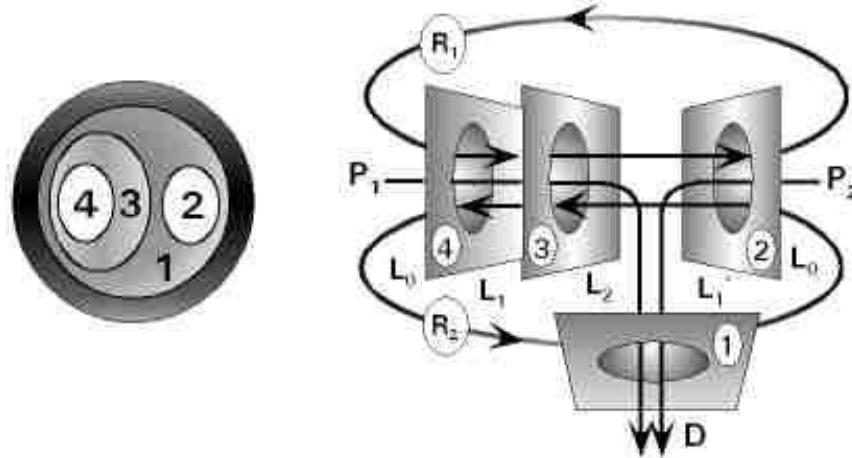


Fig. 2

In Step 3 of each Cycle UT6 does not transform. Instead UT9 transforms to UT8R which coheres with UT6. The advance to C3 in UT9 concerns a Universal Routine of scheduling the distribution of available resources, necessitating the transformation to UT8R. The *Routine* interface is the third in the sequence of UT9. A second look at UT8R shows the countercurrent relational wholes  $R_1$  and  $R_2$  within the context of the Host(1), while in the UT6 triad Cells(1), Organs(2) and Host(1) are mutually linked in pairs by self-similar countercurrent identities that require them to have mutual boundaries. Because the active interfaces in UT8R are open and unbounded, the Host (1) interface can align with the Form(4) interface of the UT6 term, such that each human Host is identified with the molecular Forms common to the universe that clothe them, as common logic tells us.

The countercurrent identities of UT8R link up the members of the UT6 triad in pairs within this dual context of molecular Form(3) and archetypal Host Idea(1). It must do this in counterclockwise order from C1 to C3, then from C3 to C2, then from C2 back to C1. Only in this order do the Cell(3) and Organ(2) interfaces align in both UT8R and UT6. Otherwise Organs and Cells would be at cross purposes resulting in degenerate cycles associated with disease. To help visualize how these Primary and Secondary Terms cohere together the three distinct linkages across each UT6 triad interval are described as separately follows:

### The Host (1) to Cells (3) Interval of UT6 (examine the diagrams closely):

The open Cell(3) interface of UT8R aligns all cells of each human Host(1) in UT6. Across the interval between Host(1) and Cells(3) in UT6 the open Organ(2) interface of UT8R aligns specific closed Cells(3) of UT6 in each Organ(2). The countercurrent  $R_1$  and  $R_2$  in UT8R thus relates the molecular Forms(4) within all Cells(3) of each human Host(1) across the interval to specific closed Cells(3) in UT6 as specified for all human Organs(2) by the open interface of UT8R.

### **The Cells (3) to Organs (2) Interval of UT6:**

The open Cell(3) interface of UT8R aligns with all specific closed Cells(3) of UT6 of each human being. Across the interval between Cells(3) and Organs(2) in UT6 the open Organ(2) interface of UT8R aligns with all specific closed Organs(2) of UT6. The countercurrent  $R_1$  and  $R_2$  in UT8R thus relates the open molecular Forms(4) within all Cells(3) across the interval from specific closed Cells(3) to each specific Organ(2) in UT6 as specified for all human Organs(2) by the open interface of UT8R.

### **The Organs (2) to Host (1) Interval of UT6:**

The open Cell(3) interface of UT8R aligns with all specific closed Organs(2) of UT6 of each human being. Across the interval between Organs(2) and Host(1) in UT6 the open Organs(2) interface of UT8R aligns with each specific human Host(1) of UT6. The countercurrent  $R_1$  and  $R_2$  in UT8R thus relates the open molecular Forms(4) within all Cells(3) across the interval from specific closed Organs(2) to each human Host(1) in UT6 as specified for all human Organs(2) by the open interface of UT8R.

These three pairs of linkages within this dual context require that all molecular processes in all cells within all organs of each human being conform to a Primary Universal pattern for all human beings. The triadic relationship between Cells(3), Organs(2) and Host(1) within the physical Form(4) of the external environment in UT6 find living compatibility with the relationship between Organs, Cells and their internal molecular Forms within the context of the Primary Universal Archetypal Host(1) of all human beings as required by UT8R.

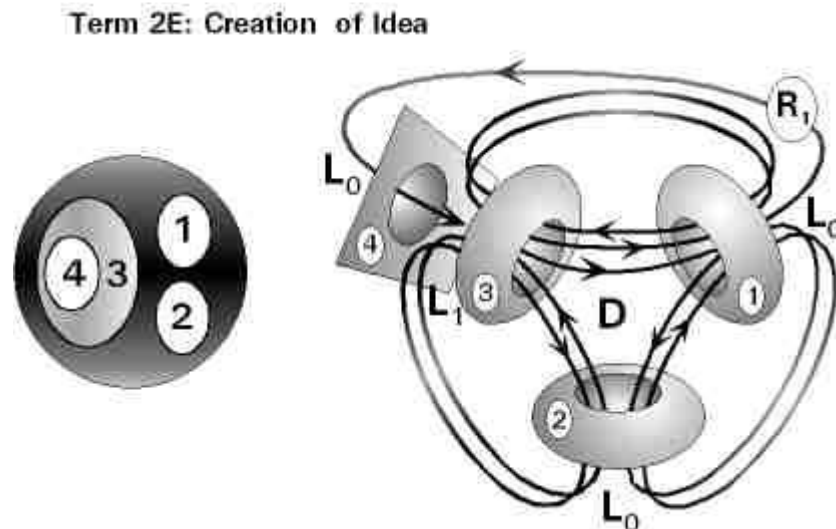
The projections  $P_1$ ,  $P_2$  and  $P_3$  of UT6 are each required to balance available molecular energy supplies with anticipated demand as specified by  $P_2$  and  $P_1$  respectively of UT8R. The latter  $P_2$  and  $P_1$  projections span each of the three intervals of UT6. Each of the  $P_1$ ,  $P_2$  and  $P_3$  projections around the triad of UT6 thus consists of a balance between  $P_2$  and  $P_1$  of UT8R. The energy supplies and demands of the Host thus find a balanced distribution to Organs and Cells according to an ongoing priority of needs.

### **Step 4 and a Coherent Balance between UT8R and UT2E**

In Step 4 UT8R does not transform. The corporeal body of UT6 inverts to a Universal expressive mode of Term 2 (UT2E). This universal creative idea term is aligned with parallel regenerative modes of Particular Terms 2 throughout the body that will be involved in a succeeding action sequence. It is also synchronous with a regenerative action sequence T5R and an expressive mode of T1E which identifies the parallel perceived needs and capacities of cells throughout the body to respond to the environment in a manner consistent with circumstance as integrated by the Universal Sets.

In this UT2E term the triad (1, 3, 2) remains linked in pairs by UT8R in the same way as in UT6 except that they are not within an external context of molecular Form(4) as in UT6. The open

Form(4) interface of UT6 has inverted to a position within all cells as they relate to the archetypal Idea(1) of the specific human Host(1) including the integrated creative Idea being entertained for a subsequent action sequence. This represents the molecular Form(4) energy resources anticipated to be expended and it must be reconciled with the three synchronous Particular Terms, T1E, T2R, and T5R. The  $R_1$  in this UT2E Term is called a creative idea in a development stage consistent with other Terms and Steps. This completes a budgeted distribution of available energy supplies in cells throughout the body to meet the creative needs of the Host.



**Fig. 7**

This UT2E Term coheres with UT8R such that the expression of this creative idea takes place within the open Primary Universal Host Idea(1) as illustrated in Figure 2. This open Universal Idea(1) is the archetypal energy pattern of the whole human species. It represents the genotype of the species. In other words the expressive ideas of each specific human being relate to the whole human species. We are social creatures that independently respond to our social milieu. While this may entail ethnic and nationalistic agendas, identification with these subsumed levels of humanity to the exclusion of the whole of humanity isolate the former from the latter. Our cultural and national heritages are properly vehicles through which we can independently contribute to humanity in a global context. The age-old dilemma of “self and other” or “one and many” or “universal and particular” requires an appropriate recognition of universal values interpreted in context.

## Step 5 and a New Cycle

At the end of each Cycle there is a discontinuity since both the Primary and Secondary Universal Sets both transform back to UT9 and UT3 respectively to begin a new Cycle with the same pattern of transformations. Since there are three Particular Sets transforming through four Steps in each Cycle there is always a complete complement of seven expressive and five regenerative Particular modes in each Cycle, albeit in different Sets, as shown in Figure 8.

<b>Universal Sets</b>	<b>Step 1</b>	<b>Step 2</b>	<b>Step 3</b>	<b>Step 4</b>
Primary Set	UT9	UT9	UT8R	UT8R
Secondary Set	UT3	UT6	UT6	UT2E
<b>Particular Sets</b>				
Set 1	T8E	T5E	T7E	T1E
Set 2	T7R	T1R	T4R	T2R
Set 3	T4E	T2E	T8E	T5R

**Fig. 8**

The dynamic pattern of transformations is illustrated in the articles Intorduction to the System and System 4 Terms

### **The Subsumed Level of the Cell**

Because of the nested self-similar character of how the System works the above description of how the human Host(1), Organs(2), Cells(3) and molecular Form(4) are integrated, this description can also be applied to how Host Cells(1), Organelles(2), Enzymes(3) and molecular Form(4) are organized and integrated. This methodology allows us to read down inside the cell to gene transcription, translation, and related epigenetic factors as introduced in other cell articles. The methodology can thus expand the horizons of science in far more meaningful ways.

#### **References:**

- [http://www.cosmic-mindreach.com/Human\\_Integration\\_Cell\\_article.html](http://www.cosmic-mindreach.com/Human_Integration_Cell_article.html)
- <http://www.cosmic-mindreach.com/System4Terms.html>
- [http://www.cosmic-mindreach.com/System4\\_Sequence\\_Steps.html](http://www.cosmic-mindreach.com/System4_Sequence_Steps.html)
- [http://www.cosmic-mindreach.com/System4\\_Sequence\\_Part\\_2.html](http://www.cosmic-mindreach.com/System4_Sequence_Part_2.html)
- [http://www.cosmic-mindreach.com/Gene\\_Expression.html](http://www.cosmic-mindreach.com/Gene_Expression.html)